

12000010100011

Sample Ballot

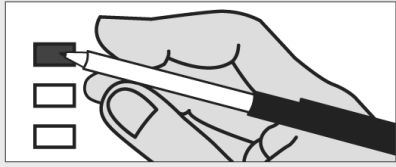
500000028106

Sample Ballot

4223031189

**Instructions**

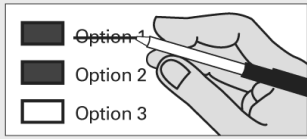
**How to vote**



Use a dark blue or black ink pen to completely fill in the box to the left of your choice.

Vote for one in each race. If you vote for more than one, no votes will be counted for that race.

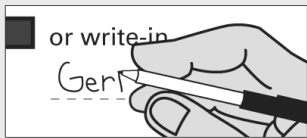
**If you make a mistake**



Draw a line through the entire measure response or candidate's name.

Then you may make another choice.

**Optional write-in**



To vote for a candidate not listed for that race, fill in the box to the left of "or write-in" and print the name on the dashed line.

**Start voting here**

**Statewide Measures**

**Proposed by Initiative Petition  
Initiative Measure No. 1185**

Initiative Measure No. 1185 concerns tax and fee increases imposed by state government. This measure would restate existing statutory requirements that legislative actions raising taxes must be approved by two-thirds legislative majorities or receive voter approval, and that new or increased fees require majority legislative approval. Should this measure be enacted into law?  
Vote for one

Yes

No

**Proposed by Initiative Petition  
Initiative Measure No. 1240**

Initiative Measure No. 1240 concerns creation of a public charter school system. This measure would authorize up to forty publicly-funded charter schools open to all students, operated through approved, nonreligious, nonprofit organizations, with government oversight; and modify certain laws applicable to them as public schools. Should this measure be enacted into law?  
Vote for one

Yes

No

**Passed by the Legislature and  
Ordered Referred by Petition  
Referendum Measure No. 74**

The legislature passed Engrossed Substitute Senate Bill 6239 concerning marriage for same-sex couples, modified domestic-partnership law, and religious freedom, and voters have filed a sufficient referendum petition on this bill. This bill would allow same-sex couples to marry, preserve domestic partnerships only for seniors, and preserve the right of clergy or religious organizations to refuse to perform, recognize, or accommodate any marriage ceremony. Should this bill be:  
Vote for one

Approved

Rejected

**Proposed to the Legislature and  
Referred to the People  
Initiative Measure No. 502**

Initiative Measure No. 502 concerns marijuana. This measure would license and regulate marijuana production, distribution, and possession for persons over twenty-one; remove state-law criminal and civil penalties for activities that it authorizes; tax marijuana sales; and earmark marijuana-related revenues. Should this measure be enacted into law?  
Vote for one

Yes

No

**Proposed to the People by the Legislature:  
Amendment to the State Constitution**

**Engrossed Senate Joint Resolution  
No. 8221**

The Legislature has proposed a constitutional amendment on implementing the Commission on State Debt recommendations regarding Washington's debt limit. This amendment would, starting July 1, 2014, phase-down the debt limit percentage in three steps from nine to eight percent and modify the calculation date, calculation period, and the term general state revenues. Should this constitutional amendment be:  
Vote for one

Approved

Rejected

**Senate Joint Resolution No. 8223**

The Legislature has proposed a constitutional amendment on investments by the University of Washington and Washington State University. This amendment would create an exception to constitutional restrictions on investing public funds by allowing these universities to invest specified public funds as authorized by the legislature, including in private companies or stock. Should this constitutional amendment be:  
Vote for one

Approved

Rejected

**Advisory Votes**

**Advisory Vote of the People  
Advisory Vote No. 1  
Engrossed Senate Bill 6635**

The legislature eliminated, without a vote of the people, a business and occupation tax deduction for certain financial institutions' interest on residential loans, costing \$170,000,000, in its first ten years, for government spending. This tax increase should be:  
Vote for one

Repealed

Maintained

**Advisory Vote of the People  
Advisory Vote No. 2  
Substitute House Bill 2590**

The legislature extended, without a vote of the people, expiration of a tax on possession of petroleum products and reduced the tax rate, costing \$24,000,000, in its first ten years, for government spending. This tax increase should be:  
Vote for one

Repealed

Maintained

**Federal Offices**

**President and Vice President of the United States**

Partisan office, 4 year term, Vote for one

Barack Obama / Joe Biden

Democratic Party Nominees

Mitt Romney / Paul Ryan

Republican Party Nominees

Gary Johnson / James P. Gray

Libertarian Party Nominees

Virgil Goode / James N. Clymer

Constitution Party Nominees

Jill Stein / Cheri Honkala

Green Party Nominees

Peta Lindsay / Yari Osorio

Socialism & Liberation Party Nominees

James Harris / Alyson Kennedy

Socialist Workers Party Nominees

Ross C. (Rocky) Anderson / Luis J. Rodriguez

Justice Party

or write-in:

**READ: Each candidate for president and vice-president is the official nominee of a political party. For other partisan offices, each candidate may state a political party that he or she prefers. A candidate's preference does not imply that the candidate is nominated or endorsed by the party, or that the party approves of or associates with that candidate.**

**United States Senator**

Partisan Office, 6 Year Term, Vote for one

Maria Cantwell

(Prefers Democratic Party)

Michael Baumgartner

(Prefers Republican Party)

or write-in:

**United States Representative  
Congressional District 1**

Partisan Office, 2 Year Term, Vote for one

John Koster

(Prefers Republican Party)

Suzan DelBene

(Prefers Democratic Party)

or write-in:

**Continue** →

12000010200018

Sample Ballot

500000028203

Sample Ballot

4223031189

**Federal Office**

**United States Representative  
Congressional District 2**  
Partisan Office, 2 Year Term, Vote for one

Rick Larsen  
(Prefers Democratic Party)

Dan Matthews  
(Prefers Republican Party)

or write-in:  
-----

**Statewide Offices**

**Governor**  
Partisan Office, 4 Year Term, Vote for one

Jay Inslee  
(Prefers Democratic Party)

Rob McKenna  
(Prefers Republican Party)

or write-in:  
-----

**Lieutenant Governor**  
Partisan Office, 4 Year Term, Vote for one

Brad Owen  
(Prefers Democrat Party)

Bill Finkbeiner  
(Prefers Republican Party)

or write-in:  
-----

**Secretary of State**  
Partisan Office, 4 Year Term, Vote for one

Kim Wyman  
(Prefers Republican Party)

Kathleen Drew  
(Prefers Democratic Party)

or write-in:  
-----

**State Treasurer**  
Partisan Office, 4 Year Term, Vote for one

Jim McIntire  
(Prefers Democratic Party)

Sharon Hanek  
(Prefers Republican Party)

or write-in:  
-----

**State Auditor**  
Partisan Office, 4 Year Term, Vote for one

James Watkins  
(Prefers Republican Party)

Troy Kelley  
(Prefers Democratic Party)

or write-in:  
-----

**State Attorney General**  
Partisan Office, 4 Year Term, Vote for one

Bob Ferguson  
(Prefers Democratic Party)

Reagan Dunn  
(Prefers Republican Party)

or write-in:  
-----

**Commissioner of Public Lands**  
Partisan Office, 4 Year Term, Vote for one

Peter J. Goldmark  
(Prefers Democratic Party)

Clint Didier  
(Prefers Republican Party)

or write-in:  
-----

**Superintendent of Public Instruction**  
Non-Partisan Office, 4 Year Term, Vote for one

Randy I. Dorn

or write-in:  
-----

**State Insurance Commissioner**  
Partisan Office, 4 Year Term, Vote for one

Mike Kreidler  
(Prefers Democratic Party)

John R. Adams  
(Prefers Republican Party)

or write-in:  
-----

**State Offices**

**State Senator  
Legislative District 10**  
Partisan Office, 4 Year Term, Vote for one

Barbara Bailey  
(Prefers Republican Party)

Mary Margaret Haugen  
(Prefers Democratic Party)

or write-in:  
-----

**State Senator  
Legislative District 39**  
Partisan Office, 4 Year Term, Vote for one

Kirk Pearson  
(Prefers Republican Party)

Scott Olson  
(Prefers Democratic Party)

or write-in:  
-----

**State Senator  
Legislative District 40**  
Partisan Office, 4 Year Term, Vote for one

Kevin Ranker  
(Prefers Democratic Party)

John Swapp  
(Prefers Independent-Gop Party)

or write-in:  
-----

**State Representative  
Legislative District 10  
Position 1**  
Partisan Office, 2 Year Term, Vote for one

Norma Smith  
(Prefers Republican Party)

Aaron Simpson  
(Prefers Democratic Party)

or write-in:  
-----

**State Representative  
Legislative District 10  
Position 2**  
Partisan Office, 2 Year Term, Vote for one

Dave Hayes  
(Prefers Republican Party)

Tom Riggs  
(Prefers Democratic Party)

or write-in:  
-----

**State Representative  
Legislative District 39  
Position 1**  
Partisan Office, 2 Year Term, Vote for one

Dan Kristiansen  
(Prefers Republican Party)

Linda Wright  
(Prefers Democrat Party)

or write-in:  
-----

**State Representative  
Legislative District 39  
Position 2**  
Partisan Office, 2 Year Term, Vote for one

Eleanor Walters  
(Prefers Democratic Party)

Elizabeth Scott  
(Prefers Republican Party)

or write-in:  
-----

**State Representative  
Legislative District 40  
Position 1**  
Partisan Office, 2 Year Term, Vote for one

Kristine Lytton  
(Prefers Democratic Party)

Brandon Robinson  
(States No Party Preference)

or write-in:  
-----

**State Representative  
Legislative District 40  
Position 2**  
Partisan Office, 2 Year Term, Vote for one

Jeff Morris  
(Prefers Democratic Party)

Howard A. Pellett  
(Prefers Green Party)

or write-in:  
-----

**County Offices**

**Skagit County  
Commissioner District 1**  
Partisan Office, 4 Year Term, Vote for one

Ron Wesen  
(Prefers G.O.P. Party)

Nick Petrish  
(Prefers Democratic Party)

or write-in:  
-----

**Skagit County  
Commissioner District 2**  
Partisan Office, 4 Year Term, Vote for one

Kenneth A. Dahlstedt  
(Prefers Democrat Party)

April Axthelm  
(Prefers Republican Party)

or write-in:  
-----

**Continue** →

22000010300010

Sample Ballot

500000028106

**County Office**

**Public Utility District  
Commissioner District 2**

Non-Partisan Office, 6 Year Term, Vote for one

- Mike Newman
- Robbie Robertson
- or write-in: \_\_\_\_\_

**Local Issues**

**City of Sedro-Woolley  
Proposition No. 1  
Sales and Use Tax  
for Public Safety Purposes**

The City Council of the City of Sedro-Woolley has adopted Resolution No. 864 -12 concerning a sales and use tax pursuant to RCW 82.14.450. If approved, this proposition would authorize an additional sales and use tax at the rate of 0.1 percent to be used exclusively for public safety purposes. Should this proposition be:  
Vote for one

- Approved?
- Rejected?

**Town of La Conner  
Proposition No. 478  
Sales and Use Tax for Fire  
Protection Services & Equipment**

The Town Council of the Town of La Conner has adopted Resolution No. 478 concerning a sales and use tax pursuant to RCW 82.14.450. If approved, the proposition would authorize an additional sales and use tax at the rate of 0.1 percent to be used exclusively for Fire protection services and equipment purposes. Should this proposition be:  
Vote for one

- Approved?
- Rejected?

**Proposed Rural Partial-County  
Library District  
Proposition No. 1**

Shall a rural partial-county library district be formed in the unincorporated area of the Sedro-Woolley School District?  
Vote for one

- Yes
- No

**Fidalgo Pool & Fitness Center  
District**

**Proposition No. 1  
Maintenance and Operation Levy**

Shall Fidalgo Pool & Fitness Center District continue to be funded for the next three years (2013-2015) by a tax of approximately \$0.1394 cents per \$1,000 assessed valuation (for example \$100,000 assessed property value equals \$13.94 per year) to provide \$586,410 in 2013, with additional increases if deemed necessary that will not exceed 1% each year, to pay part of maintenance and operational expenses, with taxes to be collected in 2013-2015?  
Vote for one

- Yes
- No

**Skagit PTBA, Precinct 110  
Proposition No. 1**

Shall the area comprised of the voter precinct of Big Lake (Precinct 110) be annexed to the Skagit Public Transit Benefit Area and thereby authorize a four-tenths of one percent (0.4%) sales tax for public transportation?  
Vote for one

- Yes
- No

**Skagit PTBA, Precinct 140  
Proposition No. 1**

Shall the area comprised of the voter precinct of Montborne (Precinct 140) be annexed to the Skagit Public Transit Benefit Area and thereby authorize a four-tenths of one percent (0.4%) sales tax for public transportation?  
Vote for one

- Yes
- No

**Judicial Offices**

**State Supreme Court  
Justice Position 2**

Non-Partisan Office, 6 Year Term, Vote for one

- Susan Owens
- or write-in: \_\_\_\_\_

**State Supreme Court  
Justice Position 8**

Non-Partisan Office, 6 Year Short/Full Term, Vote for one

- Steve Gonzalez
- or write-in: \_\_\_\_\_

**State Supreme Court  
Justice Position 9**

Non-Partisan Office, 6 Year Term, Vote for one

- Sheryl Gordon McCloud
- Richard B. Sanders
- or write-in: \_\_\_\_\_

**State Court of Appeals  
Division 1, District 3  
Judge Position 1**

Non-Partisan Office, 6 Year Term, Vote for one

- Mary Kay Becker
- or write-in: \_\_\_\_\_

**End of ballot**

Sample Ballot

4223031189



500000028397

Sample Ballot

22000010400017



Sample Ballot

This page intentionally left blank



4223031189

Sample Ballot